

Increase Your Trailer Intelligence.

FleetLocate FL22+

Introducing the newest generation of FleetLocate's flagship trailer tracker, the FL22+. With the FL22+, fleets get all the benefits of the FL22 – a powerful solution with a comprehensive suite of optional door and cargo sensors – plus an advanced power management boost from built-in solar.

RICH DATA IN REAL TIME

The FL22+ builds upon the architecture of the FL22, capturing a richer level of real-time data than any other trailer tracking product on the market. What's more, it delivers that data in a way you can use to make smarter, faster, more profitable decisions about your fleet operations.

KNOW MORE, ACT FASTER

With the FL22+'s rich data, you'll be able to see:

- Which trailers are loaded and ready to be picked up
- Which trailers are empty and ready to be used
- Delivery time when the trailer door is open
- Which trailers need a maintenance check based on actual miles driven

DO MORE WITH WHAT YOU HAVE

Armed with this level of information, you'll have the intelligence you need to:

- Improve trailer utilization
- Increase the number of turns per trailer
- Optimize trailer inventories at key locations
- Right size your fleet
- Do more with the trailers you have



FleetLocate[®]
by Spireon[®]

Spireon.com/trailer-management
©2017 Spireon, Inc. All rights reserved.

FleetLocate

FL22+

FleetLocate
by Spireon

ACTIONABLE INTELLIGENCE

The FL22+ captures rich data then converts it into business intelligence you can use to make more profitable decisions about your fleet, more quickly.

- Intuitive graphical user interface puts information at your fingertips
- Automated reports present information most relevant to senior management, managers and ops
- Exception-based alerts notify you the instant an event has occurred

COMPLETE SUITE OF SENSORS + SOLAR

The FL22+ includes a powerful suite of sensors that allows your trailers to capture and communicate a wealth of vital information. You can customize the solution to meet your needs.

DOOR SENSOR

- Enhance security
- Receive unauthorized door open and close alerts in real-time
- Improve delivery accuracy with door-open duration during unloading

CARGO SENSOR

- Locate trailers whether empty or full, at all times
- Maximize trailer utilization and efficiency
- Monitor and control detention time
- Eliminate wasted driver time and fuel looking for empty trailers

TRAILER MILEAGE

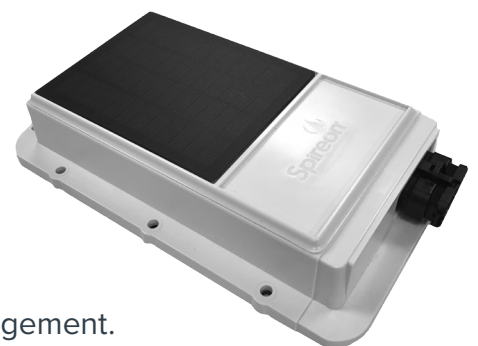
- Track turn-by-turn miles with GPS coordinates every second
- Schedule your PMs based on real mileage
- Bill leasing customers for actual mileage driven

POWER MANAGEMENT VIA SOLAR

- Extend the FL22+'s reporting life with a boost from the sun

Increase Your Trailer IQ Today

Put the power of FleetLocate's rich data to work for your trailer management.



Talk to your FleetLocate representative today.
Call Toll-Free at 1-800-557-1449

Spireon.com/trailer-management
©2017 Spireon, Inc. All rights reserved.