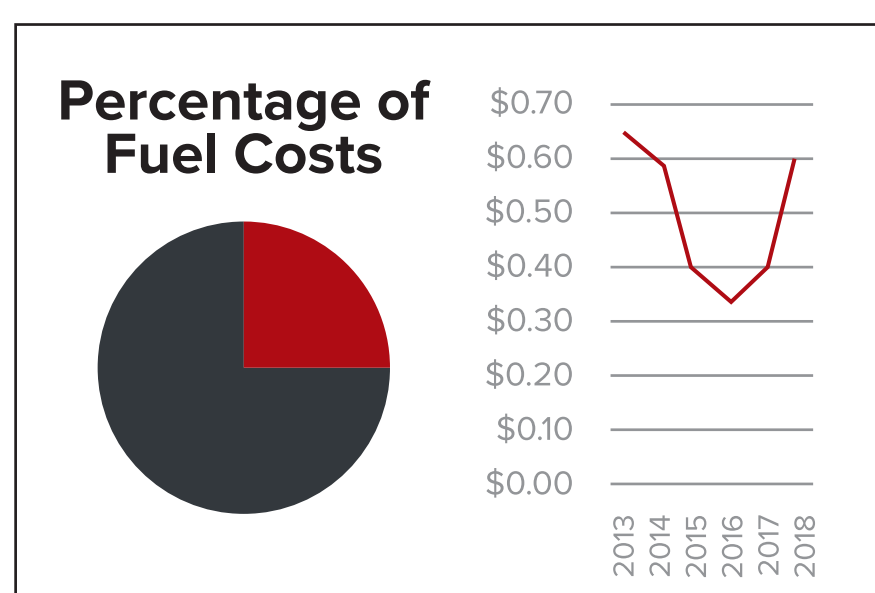


# Fuel Costs and Your Fleet: How It Impacts You and What to Do

You know fuel costs hit your bottom line, but do you know how much and what you can do about it? See below

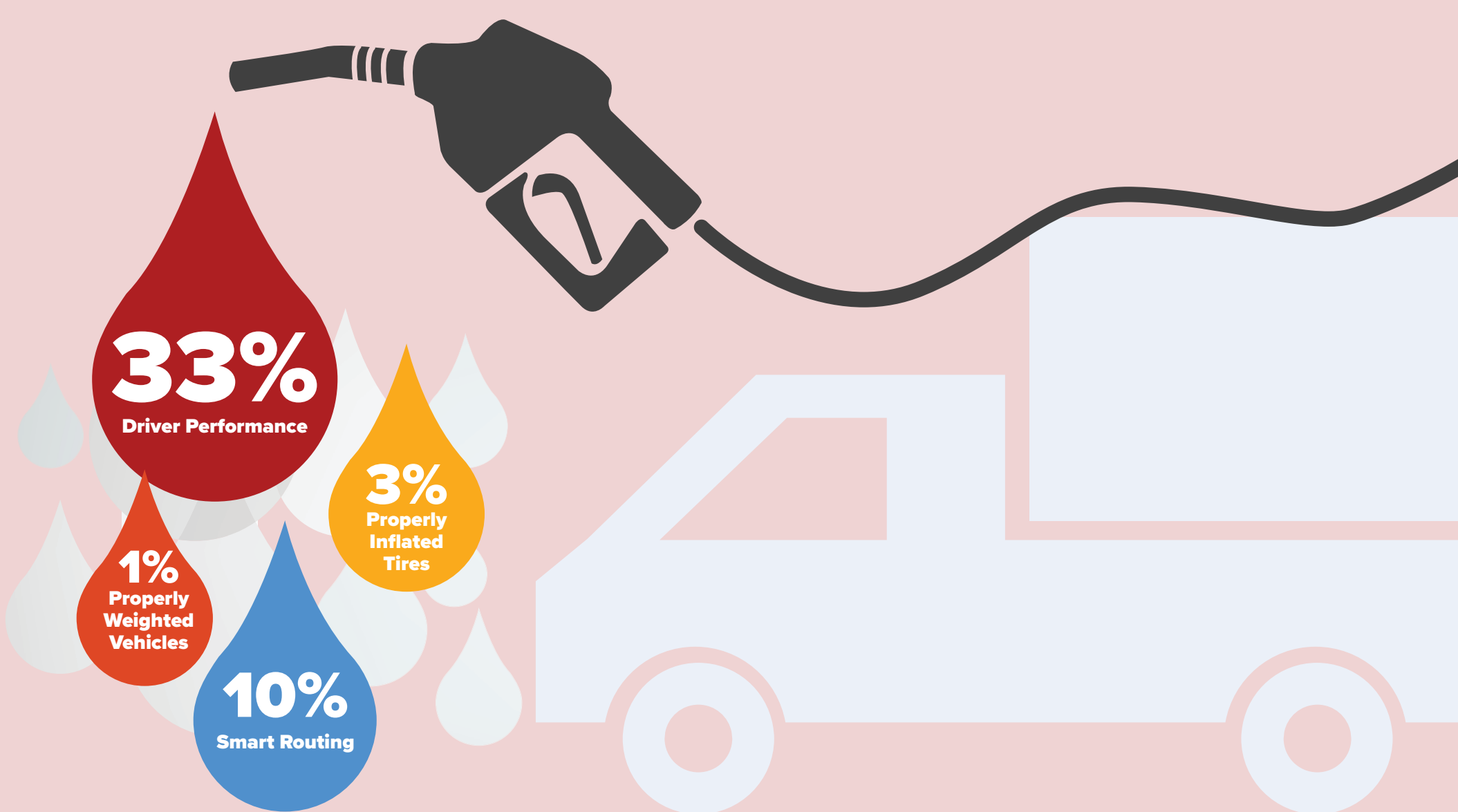
## Fuel Fluctuation

Fuel costs are a large part of fleet cost and highly volatile. Gas prices jumped in 2017 and 2018, and are continuing to rise.

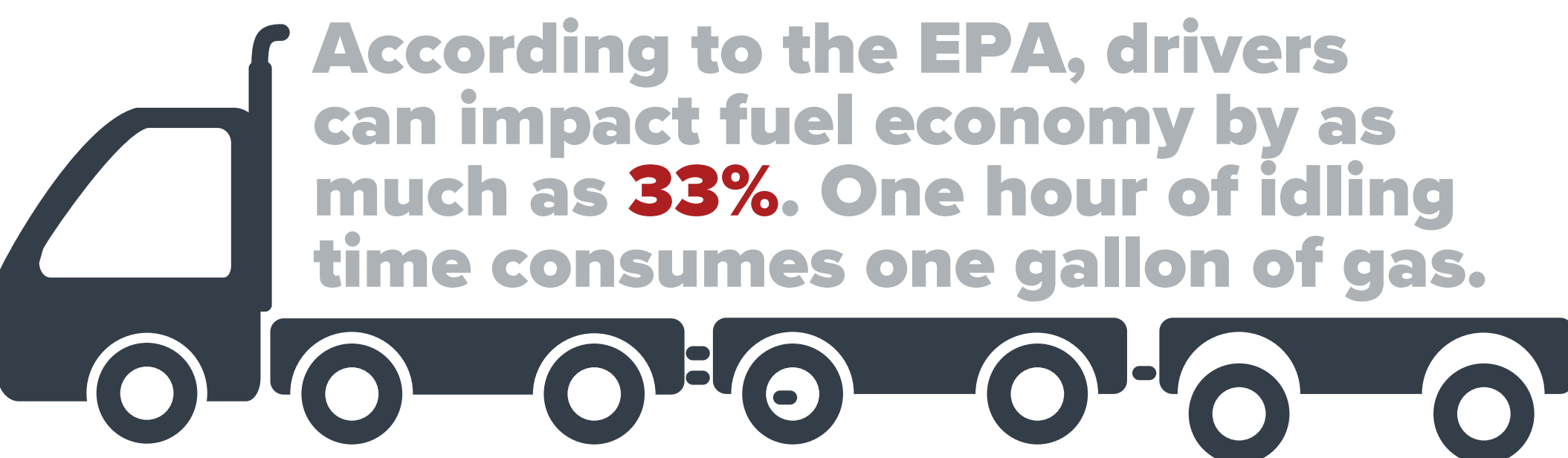


Fuel Costs =  
**Over 30%**  
of Fleet Operating Expenses

## Positive Impacts on Fuel Efficiency



## Fuel Economy



According to the EPA, drivers can impact fuel economy by as much as **33%**. One hour of idling time consumes one gallon of gas.

ONE HOUR OF IDLE TIME PER DAY = **26 MILES** DRIVEN ANNUALLY

## HOW TO REDUCE FUEL COSTS

1. REDUCING VEHICLE SIZE AND WEIGHT
2. USE INNOVATIVE VEHICLE TECHNOLOGIES: HYBRIDS, CLEANER DIESEL ENGINES, GPS FLEET MANAGEMENT SOLUTIONS
3. MODIFY DRIVER BEHAVIOR: REDUCE HARD ACCELERATION, IDLING, INCONSISTENT SPEEDS, EXCESS USE OF AIR CONDITIONING AND HARD BRAKING



Want to know more about how you can improve driver behavior and reduce fuel costs with a state-of-the-art fleet management system? Contact FleetLocate today for more information: [Spireon.com](http://Spireon.com) - 800.557.1449

### Sources

1. <http://atri-online.org/wp-content/uploads/2017/10/ATRI-Operational-Costs-of-Trucking-2017-10-2017.pdf>
2. <https://www.thetruckersreport.com/infographics/cost-of-trucking/>
3. <https://www.fleetfinancials.com/154903/10-ways-to-reduce-fleet-costs>